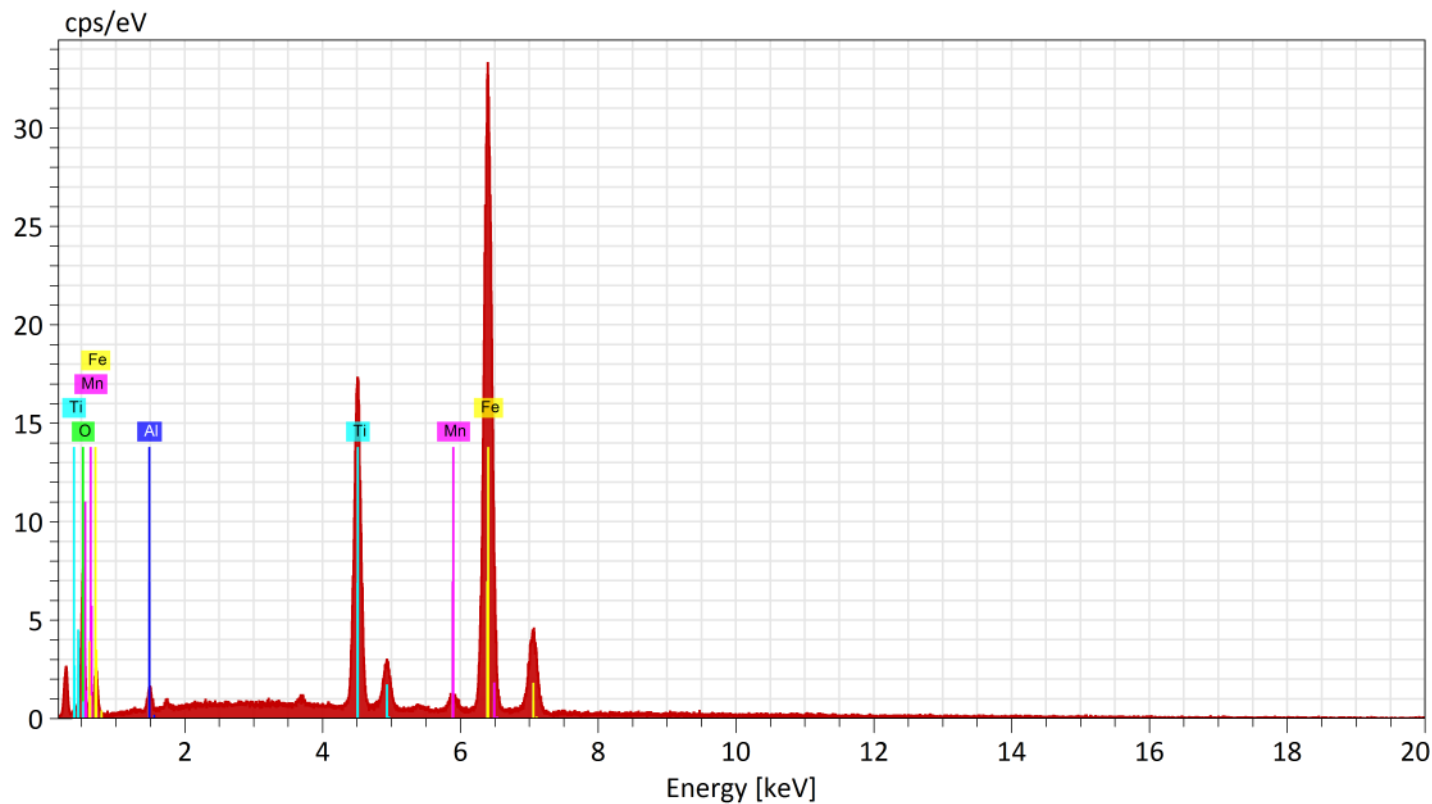


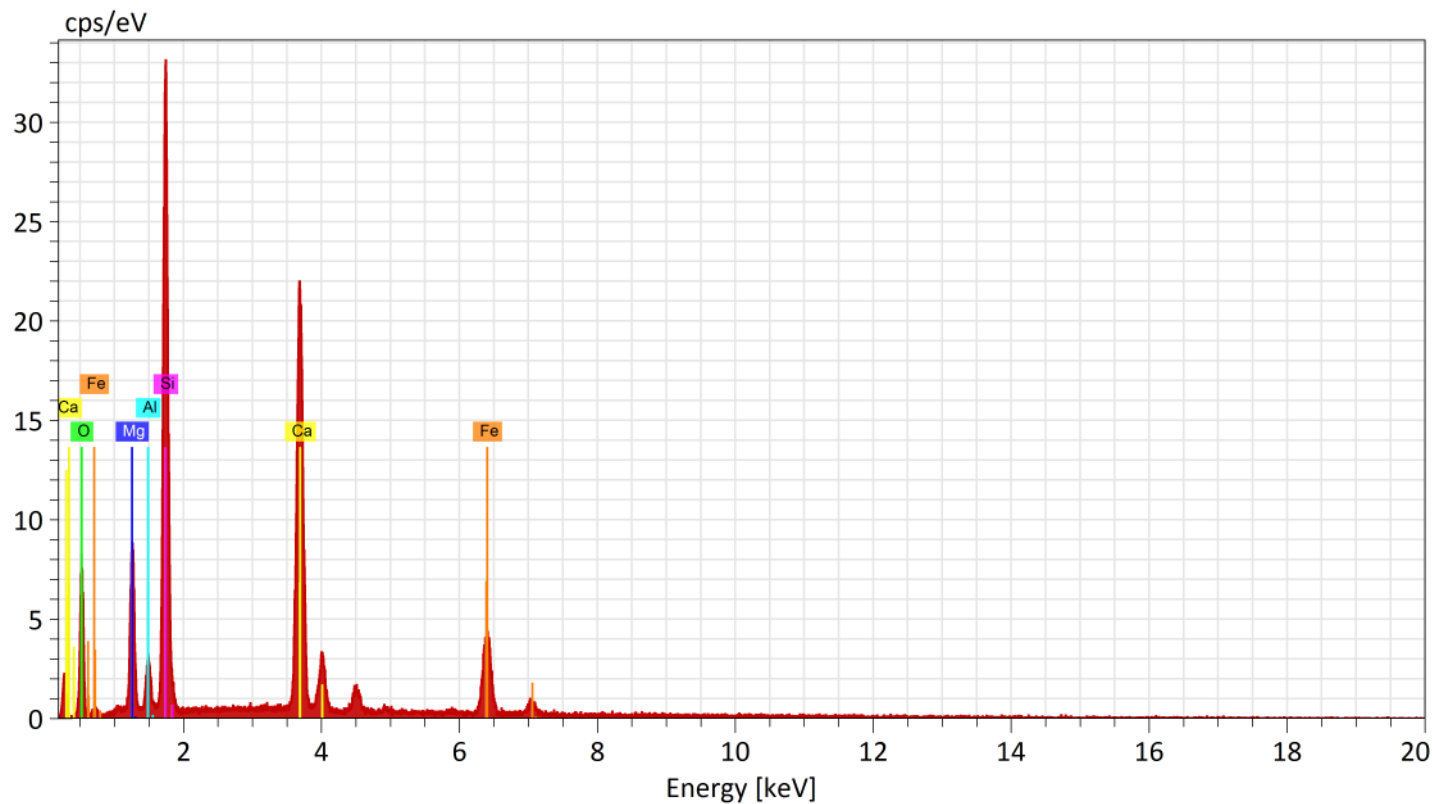
SEM-EDS Lab, Palaeontology Division, Geological Survey Of India(SR)  
Hyderabad



Normalized stoichiometric concentration [%]

Spectrum	Oxygen	Al <sub>2</sub> O <sub>3</sub>	TiO <sub>2</sub>	MnO	FeO
CMT/011/620.00	2.32	25.92	1.54	70.22	

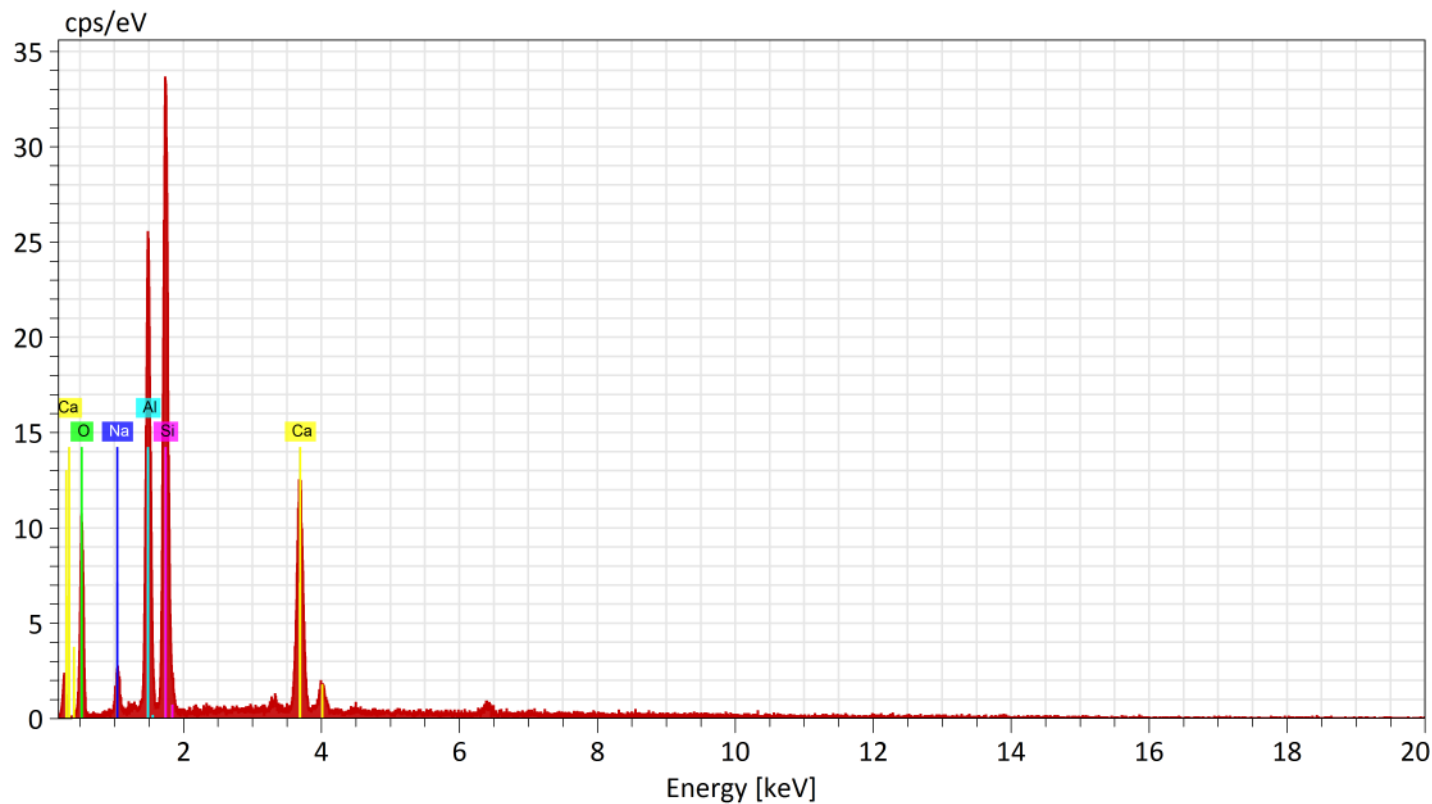
**SEM-EDS Lab, Palaeontology Division, Geological Survey Of India(SR)**  
**Hyderabad**



Normalized stoichiometric concentration [%]

Spectrum	Oxygen	MgO	Al <sub>2</sub> O <sub>3</sub>	SiO <sub>2</sub>	CaO	FeO
CMT/011/620.00		11.99	4.01	49.62	25.99	8.39

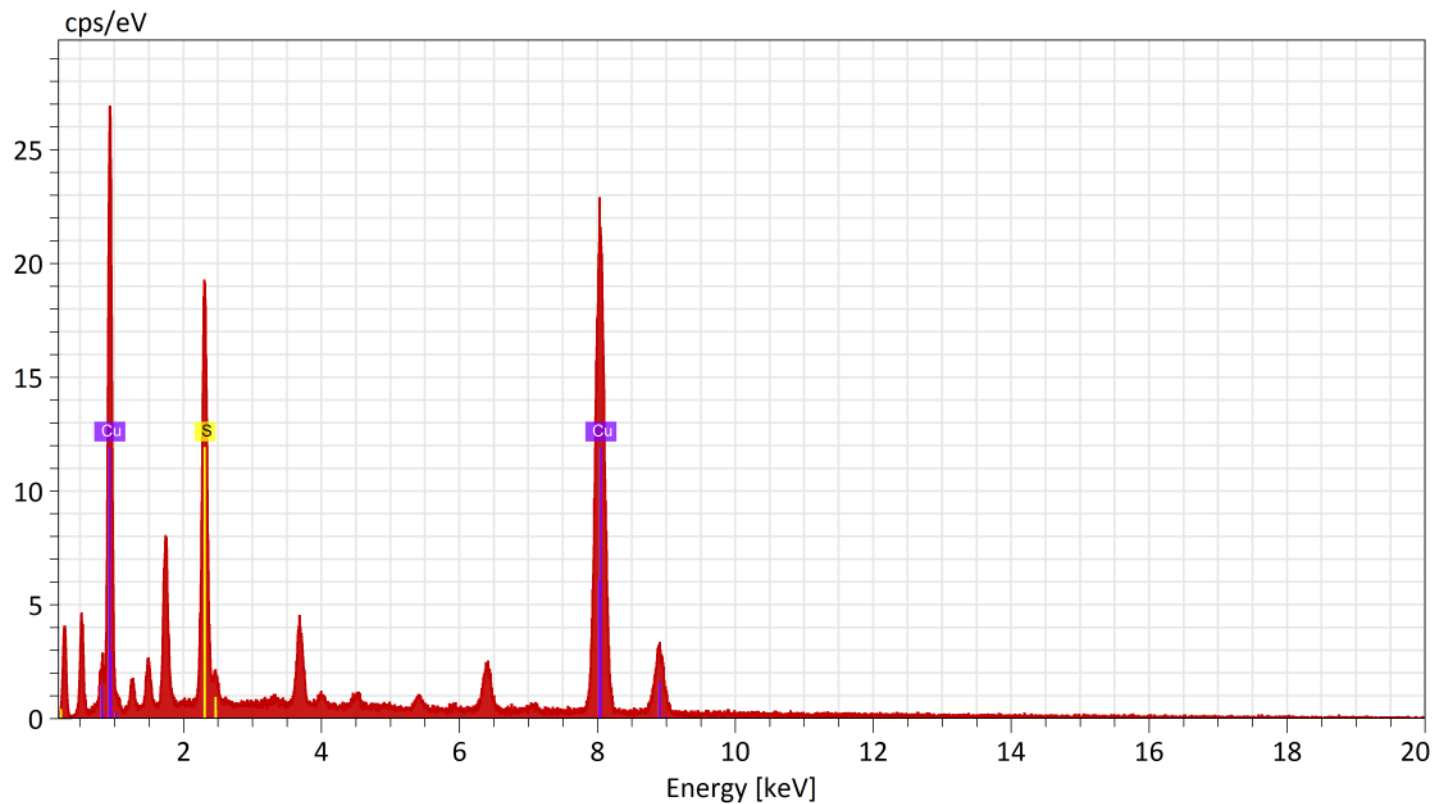
**SEM-EDS Lab, Palaeontology Division, Geological Survey Of India(SR)**  
**Hyderabad**



Normalized stoichiometric concentration [%]

Spectrum	Oxygen	Na <sub>2</sub> O	Al <sub>2</sub> O <sub>3</sub>	SiO <sub>2</sub>	CaO
CMT/011/620.00	3.69	27.56	52.82	15.93	

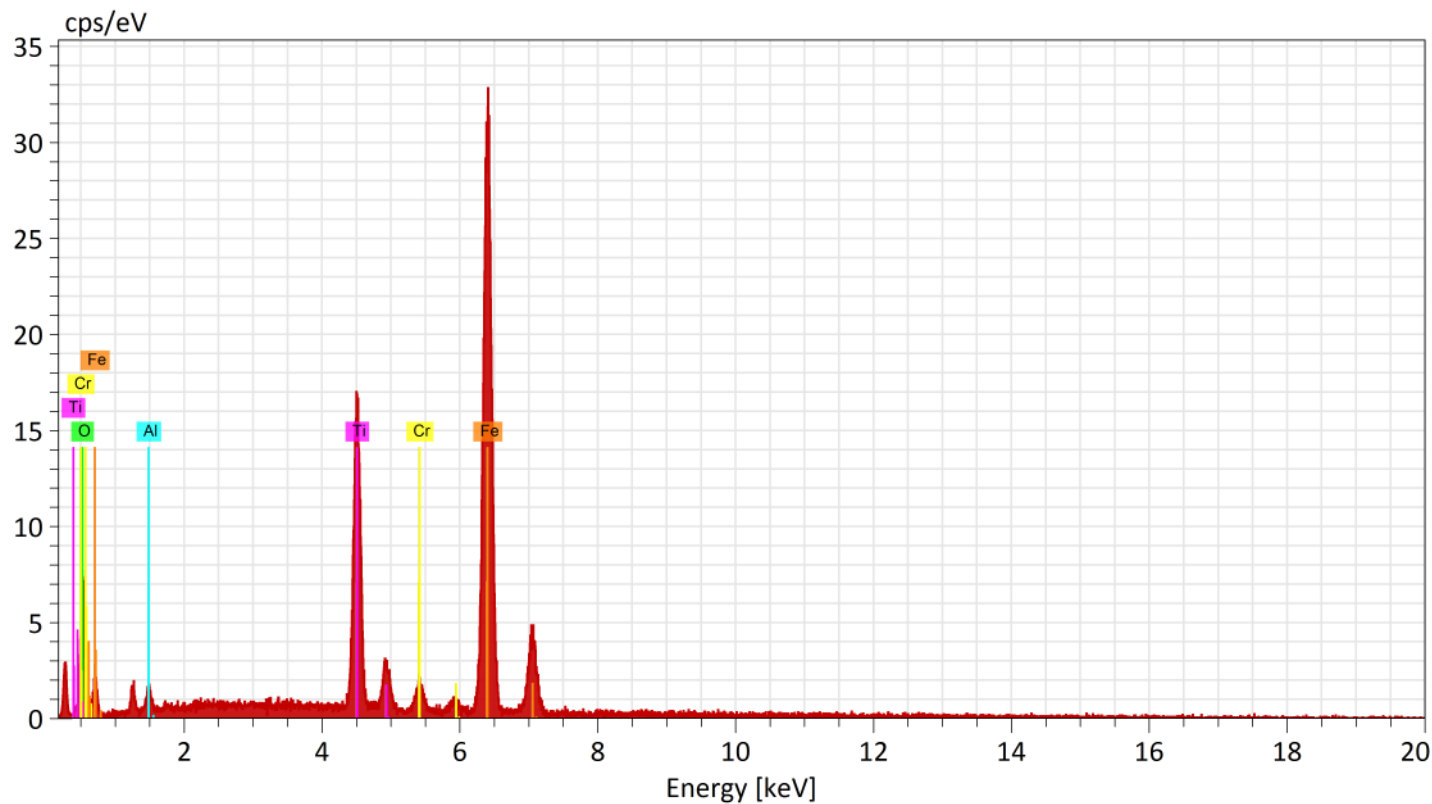
**SEM-EDS Lab, Palaeontology Division, Geological Survey Of India(SR)**  
**Hyderabad**



Normalized stoichiometric concentration [%]

Spectrum	Sulfur	Copper
CMT/011/62	21.48	78.52

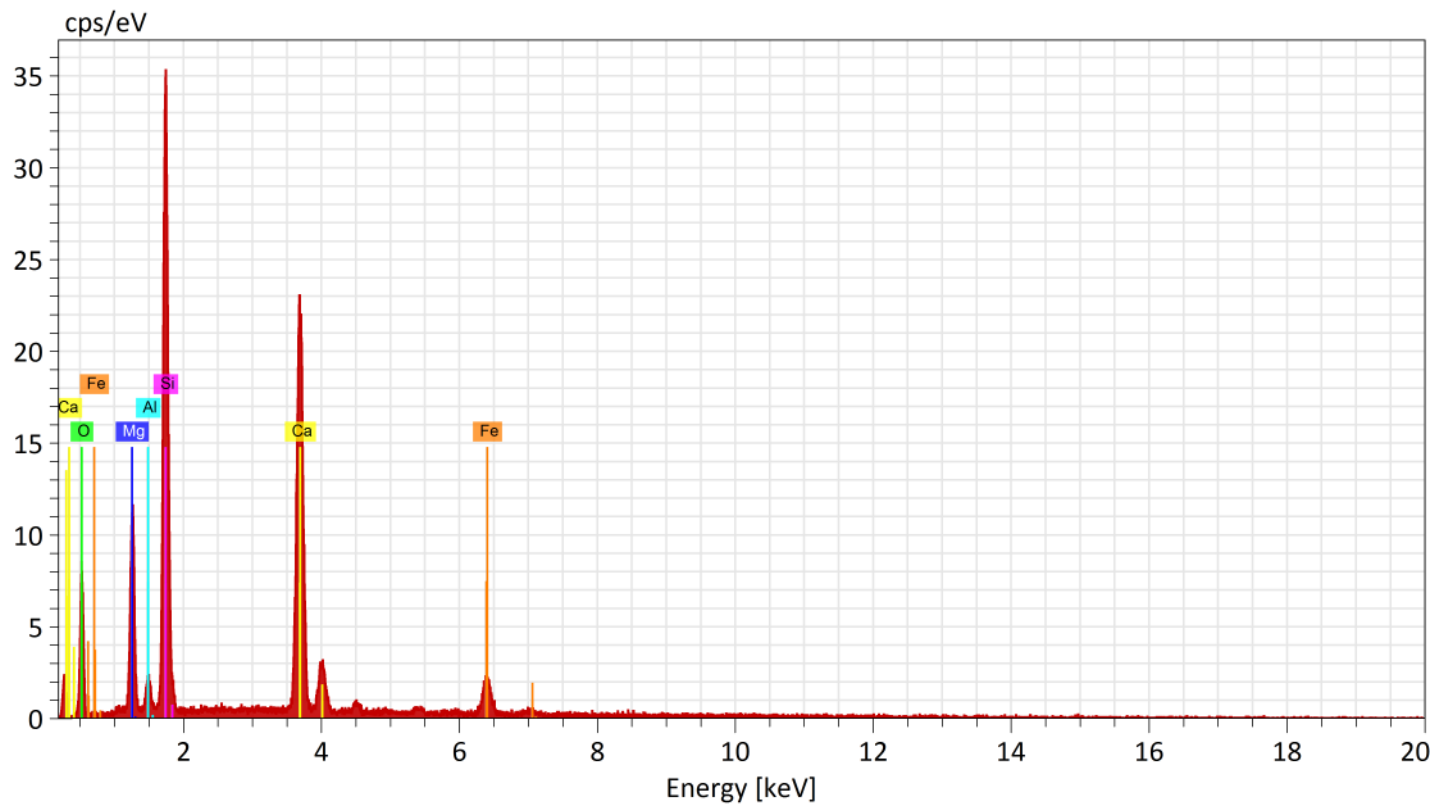
SEM-EDS Lab, Palaeontology Division, Geological Survey Of India(SR)  
Hyderabad



Normalized stoichiometric concentration [%]

Spectrum	Oxygen	Al <sub>2</sub> O <sub>3</sub>	TiO <sub>2</sub>	Cr <sub>2</sub> O <sub>3</sub>	FeO
CMT/011/620.00	2.42	25.89	2.44	69.25	

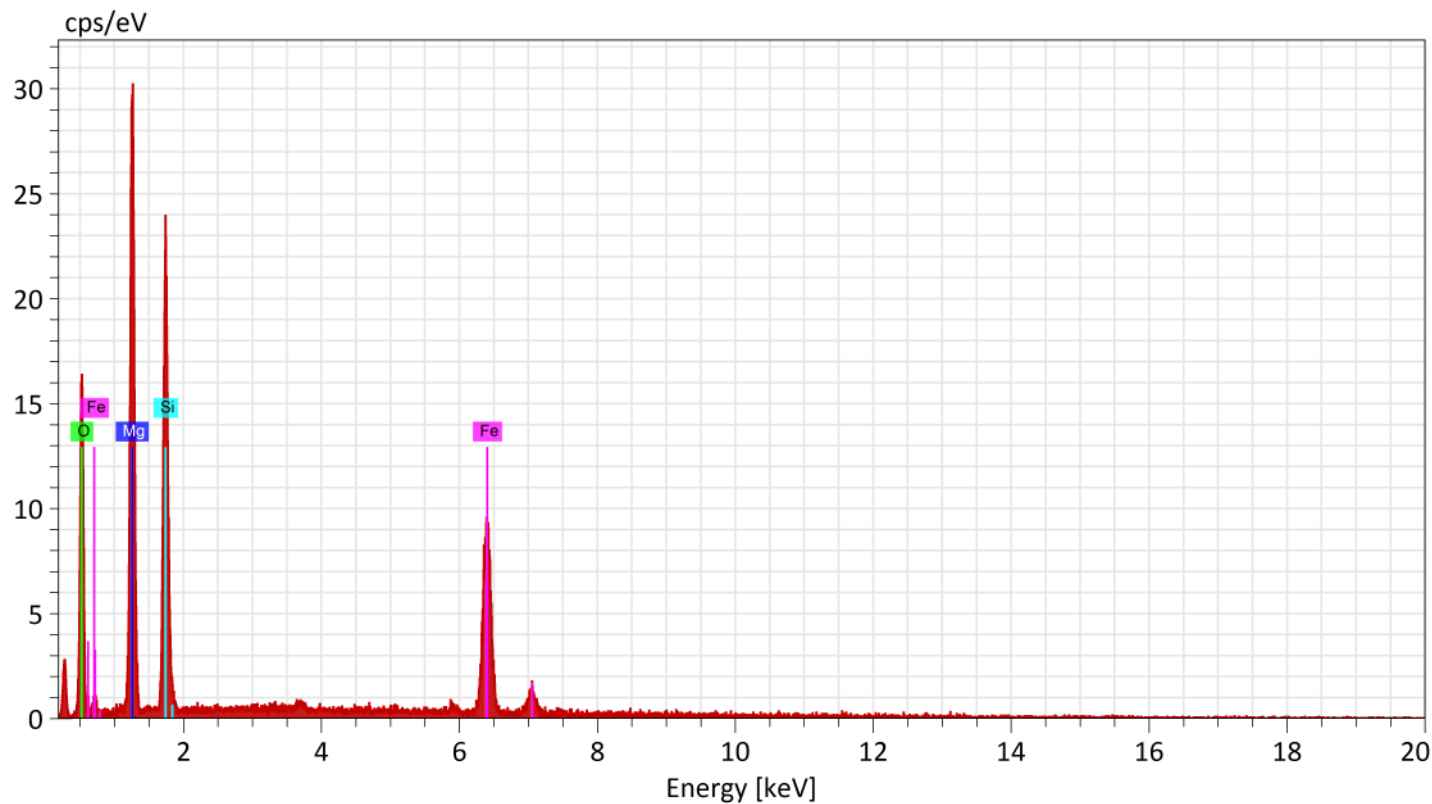
**SEM-EDS Lab, Palaeontology Division, Geological Survey Of India(SR)**  
**Hyderabad**



Normalized stoichiometric concentration [%]

Spectrum	Oxygen	MgO	Al2O3	SiO2	CaO	FeO
CMT/011/620.00		13.53	2.52	50.81	28.64	4.50

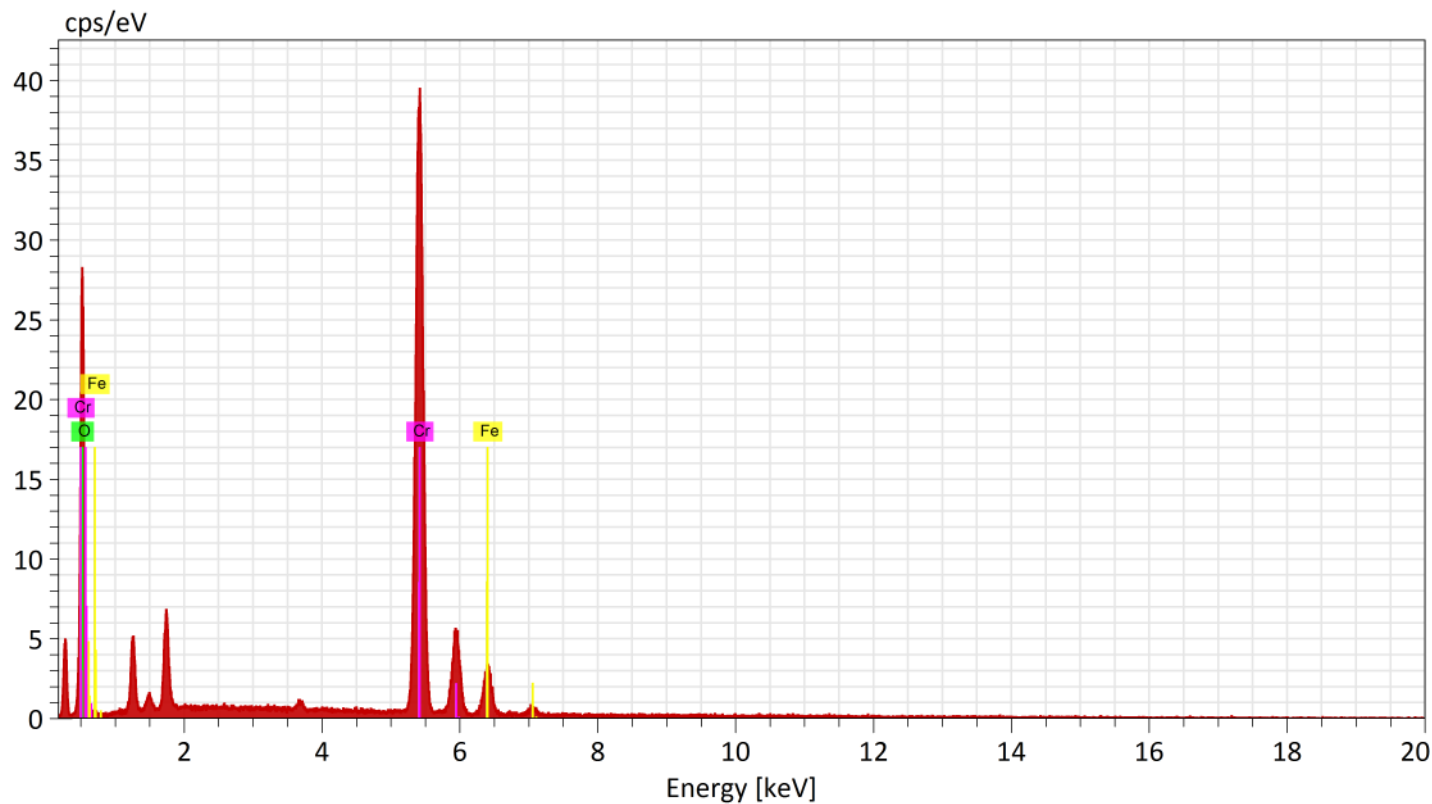
**SEM-EDS Lab, Palaeontology Division, Geological Survey Of India(SR)**  
**Hyderabad**



Normalized stoichiometric concentration [%]

Spectrum	Oxygen	MgO	SiO2	FeO
CMT/011/620.00	36.39	44.11	19.51	

**SEM-EDS Lab, Palaeontology Division, Geological Survey Of India(SR)**  
**Hyderabad**



Normalized stoichiometric concentration [%]

Spectrum	Oxygen	Cr	2O	3Fe	O
CMT/011/620.00	89.64	10.36			